



ROPE OPENER & SLITTING LINE

Lines for opening and cutting the tubular fabrics after bleaching, washing, dyeing or reprocessing operations.



ROPE OPENER & SLITTING LINE

Machine for opening and cutting the woven and tubular knit fabrics, designed for work in automatic way at high speed operation.

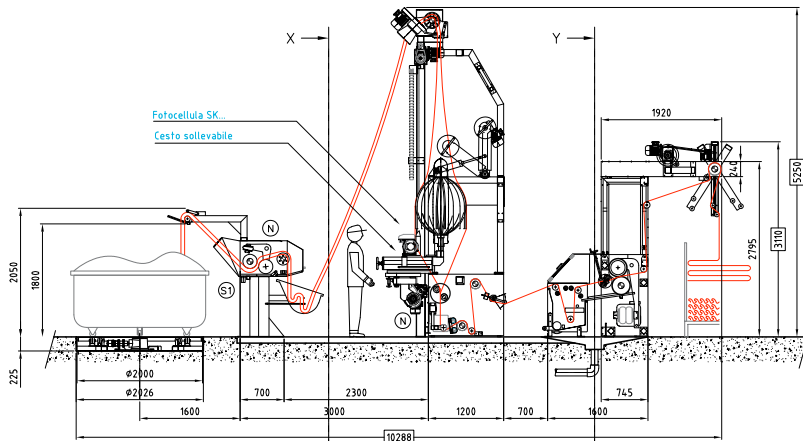
overall dimensions L x H x W	depending on the configuration
material	stainless steel
turntable diameter	1700mm (on request 2000)
rollers width	from 2000 mm to 3000 mm
fabric width	from 1800mm to 3800mm
max tubular dimension	Ø 800 mm (on request Ø 900 - Ø 1000mm - Ø 1200mm)
sensor type	Bianco SK5 vision system linear CMOS 1024 points, resolution 68 micron or SKM2 with STD1 technology
max mechanical speed	120 m/min
max compressed air	6 bar
standard voltage	3x400VAC-50Hz or others on request
installed power	11 kW Slitter, 21 kW with padder, 25 kW with padder&TNK EVO
motorization	AC controlled by inverter
padder rollers diameter	290mm
maximum load foulard squeezing	53 kg/cm
ambient temperature	from 0° to + 55 ° (optional A/C for electrical cabinet)
noise	<75db(A)
operator pannel	color touch screen
control	PLC
teleservice	optional



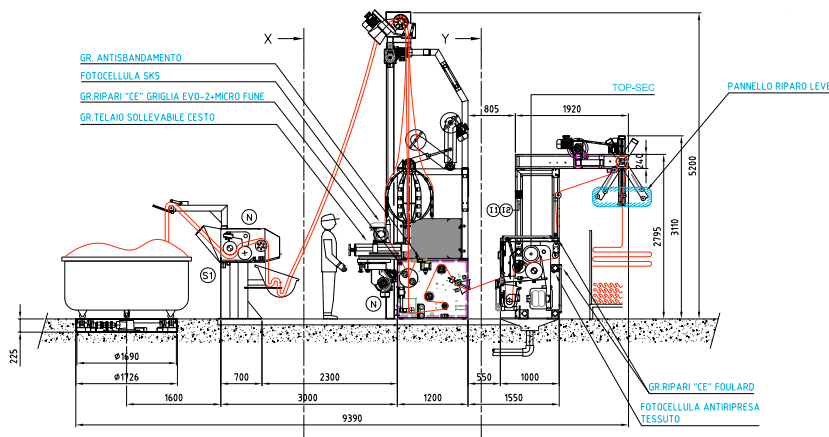
www.bianco-spa.com

ROPE OPENER & SLITTING LINE

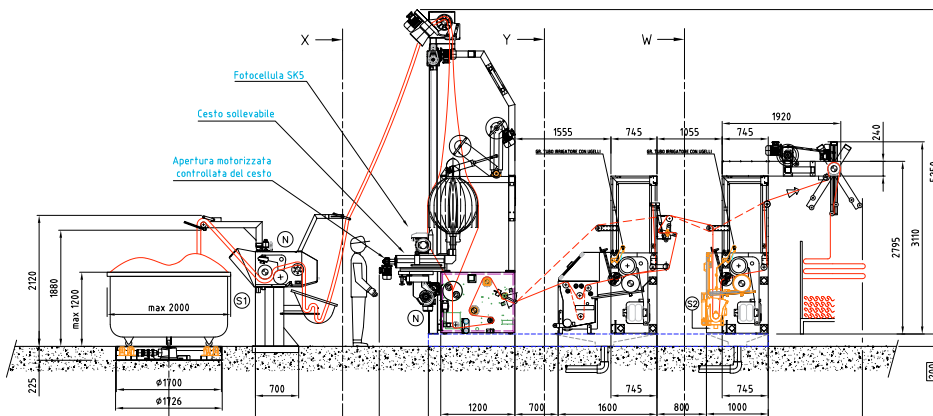
Lines for opening and cutting the tubular fabrics after bleaching, washing, dyeing or reprocessing operations.



Bianco®
Rope Opener & Slitting line
with TNK



Bianco®
Rope Opener & Slitting line
with padder



Bianco®
Rope Opener & Slitting line
with double padder and TNK